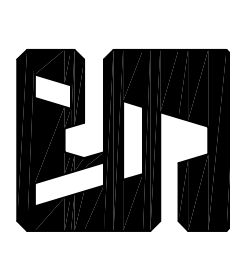


REVISIONS
No. Date

NOTE:
 (1) ALL FINAL AND EXACT DRAINAGE EASEMENTS, PUBLIC UTILITY EASEMENTS, AND PUBLIC ACCESS EASEMENTS WILL BE SHOWN ON THE FINAL PLAN FOR THIS DEVELOPMENT.

ALL EROSION CONTROL MEASURES WHETHER TEMPORARY OR PERMANENT SHALL BE MAINTAINED BY THE OWNER OR THE HOA WHERE APPLICABLE

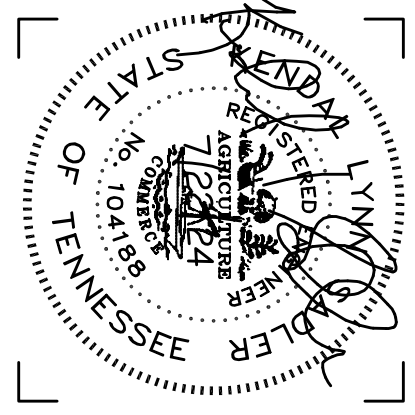
PROPOSED STONE RIDGE SUBDIVISION FOR:
 MITCH UMBARGER – JEFF ROSS
 HIGHWAY 41
 MANCHESTER, TENNESSEE



SADLER & ASSOCIATES
 CONSULTING ENGINEERS INCORPORATED

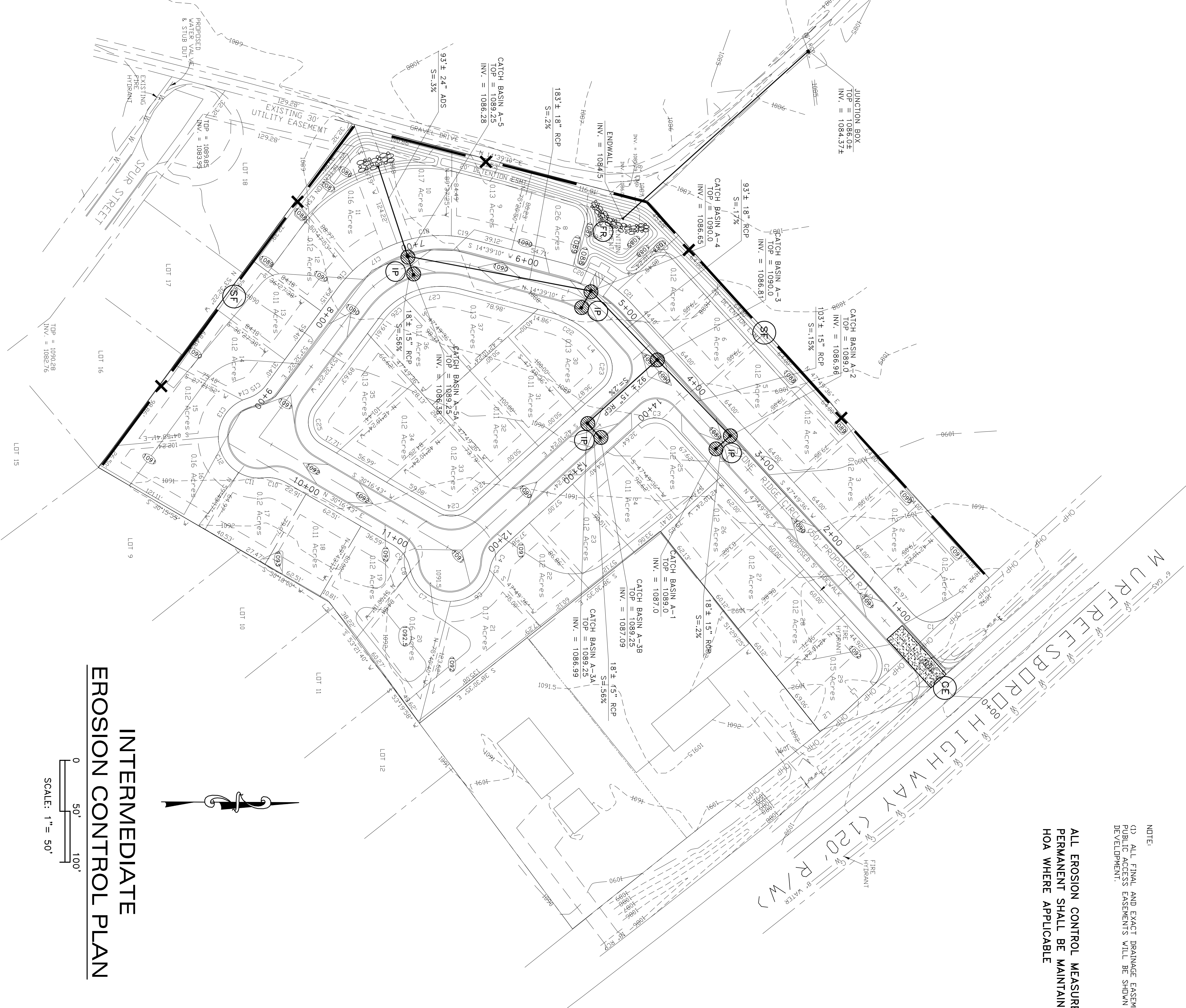
CIVIL • ENVIRONMENTAL
 TRAFFIC • PLANNING
 CONSTRUCTION MANAGEMENT

PHONE: 931-728-4961
 Email: info@sadlereengineering.com
www.sadlereengineering.com



Job No. 24-000
 Date: 7/22/24
 Checked By: K.L.L.S.
 Approved By: K.L.L.S.

DRAWING NO.
ECP-2
 OF:



EROSION CONTROL NOTES

1. EROSION CONTROL MEASURES ARE TO BE ACCOMPLISHED PRIOR TO ANY OTHER CONSTRUCTION ON THE SITE AND MAINTAINED UNTIL PERMANENT GROUND COVER IS ESTABLISHED.
2. EARTH DISTURBING ACTIVITIES SHALL BE KEPT AT A MINIMUM. SEDIMENT PONDS AND FILL SLOPES WHERE CONSTRUCTION ACTIVITY WILL NOT BE ONGOING, SHALL BE GRASSED AS SOON AS GRADING OF AREAS IS COMPLETED.
3. ANY ADDITIONAL EROSION CONTROL DEVICES NECESSARY TO PROHIBIT SEDIMENT FROM LEAVING THE SITE SHALL BE PROVIDED AS DIRECTED BY THE ENGINEER AND/OR LOCAL INSPECTOR.
4. EROSION CONTROL MEASURES WILL BE MAINTAINED AT ALL TIMES. ADDITIONAL EROSION AND SEDIMENT CONTROL MEASURES WILL BE INSTALLED IF DETERMINED NECESSARY BY ON SITE INSPECTION.
5. SEDIMENT BARRIERS, TRAPS, AND PONDS SHALL BE INSPECTED AND MAINTAINED AS OFTEN AS NECESSARY SUCH THAT ALL DEVICES ARE FUNCTIONING PROPERLY. CLEANING OF SEDIMENT AND RETURNED TO ORIGINAL USEFUL VOLUME. SILT BARRIERS, CONSTRUCTION EXITS, AND CHECK DAMS SHALL BE REPLACED, ADDED TO, OR OTHERWISE MAINTAINED TO INSURE PROPER FUNCTION.
6. FREQUENT INSPECTIONS, MAINTENANCE, AND/OR REPAIR OF EROSION AND SEDIMENT CONTROL DEVICES DURING CONSTRUCTION ARE THE RESPONSIBILITY OF THE GENERAL CONTRACTOR AND/OR PROPERTY OWNER.
7. CONSTRUCTION EXITS SHALL BE MAINTAINED AT ALL TIMES, AND ANY MUD TRACKED ONTO STREETS SHALL BE CLEANED IMMEDIATELY OR AT DIRECTION OF ENGINEER. USE WASHTRUCK AS REQUIRED.
8. SEEDING EXCEPT AS MODIFIED SHALL BE PLOWED TO A DEPTH OF 4" OR MORE FOR SHOULDERS AND FILL SLOPES AND 6" OR MORE FOR CUT SLOPES. AREAS SHALL BE CLEANED, HARROWED UNTIL WELL PULVERIZED FOR A SMOOTH, UNIFORM, WELL BROKEN SOIL. LIME AND FERTILIZER SHALL BE THOROUGHLY MIXED IN THE TOP 4" OF PREVIOUSLY LOOSENED SOIL AND SOIL RETURNED TO A SMOOTH UNIFORM SURFACE. SEEDING SHALL BE MULCHED WITH HAY OR STRAW OR APPROVED GRASSES OR GRAIN CROPS.
9. EROSION CONTROL DEVICES SHALL INCLUDE BUT NOT BE LIMITED TO CONSTRUCTION EXIT AS DETAILED, STORMWATER INLET AND OUTLET PROTECTION, SILT BARRIERS AT TOE OF FILL SLOPES.
10. ALL DRAINAGE EASEMENTS AND DETENTION PONDS SHALL BE STABILIZED UPON COMPLETION.

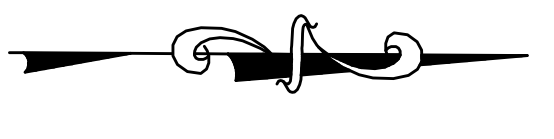
SOIL EROSION AND SEDIMENT CONTROL LEGEND

INTERMEDIATE EROSION CONTROL MEASURES SHALL INCLUDE ALL INITIAL MEASURES AND RIP-RAP AND INLET PROTECTION

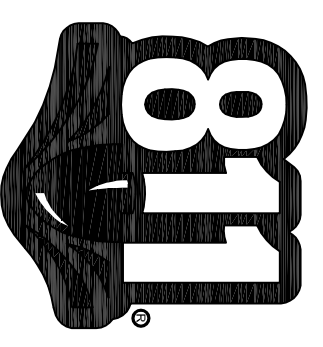
CE	CONSTRUCTION EXIT	
SF	SEDIMENT BARRIER	
IP	INLET PROTECTION	
RR	RIP-RAP	
SB	SEDIMENT BASIN	
FR	FILTER RING	

INTERMEDIATE EROSION CONTROL PLAN

SCALE: 1" = 50'



CALL BEFORE YOU DIG



THREE WORKING DAYS BEFORE YOU DIG
 IT IS THE CONTRACTOR'S RESPONSIBILITY TO CONTACT UTILITY COMPANIES PRIOR TO ANY CONSTRUCTION AS APPROVED BY THE LOCAL AUTHORITY. THESE UTILITIES ARE APPROXIMATE AND SHOULD BE VERIFIED BEFORE CERTIFICATION TO THE LOCATION OF ALL UNDERGROUND UTILITIES IS WITHHELD.